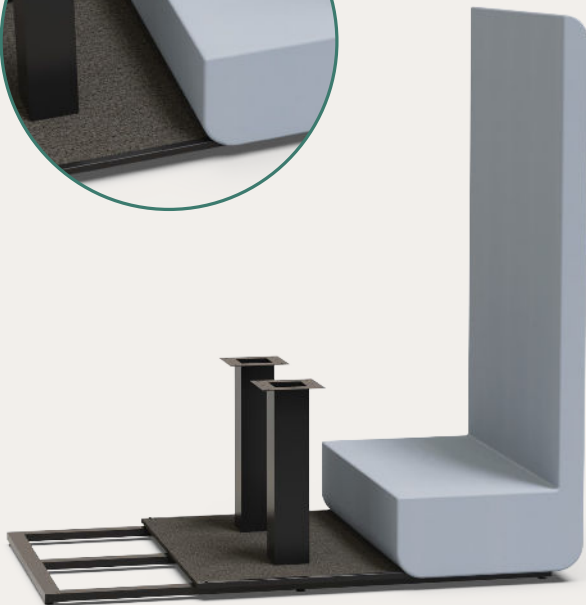
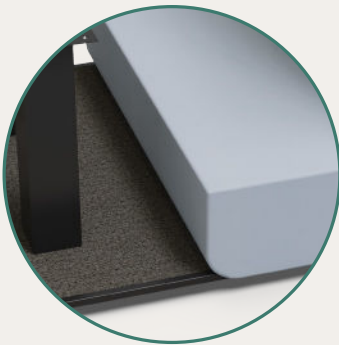


# Installation Guide

## Bob Roofed Den



# 1



## 1.1

Secure the table legs to the floor using the bolt provided in the leg. **The holes for the leg should already be pre-drilled.** Line the seam of the table leg with the inside of the booth.

## 1.2

Next lay the floor down and position one of the seats on top of the floor. **The seat bucket should overhand the carpeted floor.** This should be measured to make sure it is equal on both sides.

## 1.3

Using the metal plates provided and the **M6 x 50mm** bolts provided secure the seat bucket to the metal floor. **Make sure there is no gap between the carpet and the seat bucket.**

## 1.4

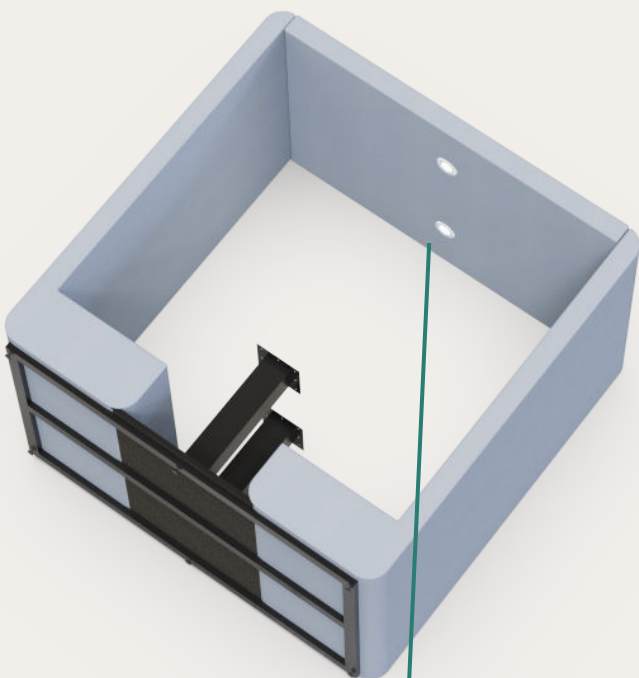
Repeat this process with the other side or seat bucket.

# 2



## 2.1

Next tilt the booth on its side. Position the roof between the two sides and position the cable inside the roof to match up with the position of the cable in one of the seat buckets.

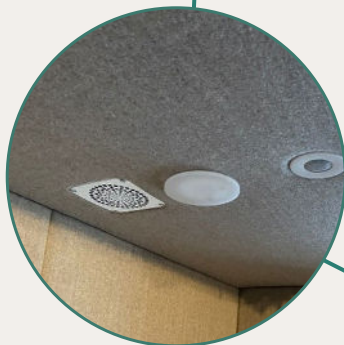


## 2.2

Using a **12mm** spade bit, drill a hole in to the roof where the cables will connect. **The hole should be drilled around 100-140mm in from the side.** This is so that the cable can go through into the roof and not get jammed in between the side and the roof.

## 2.3

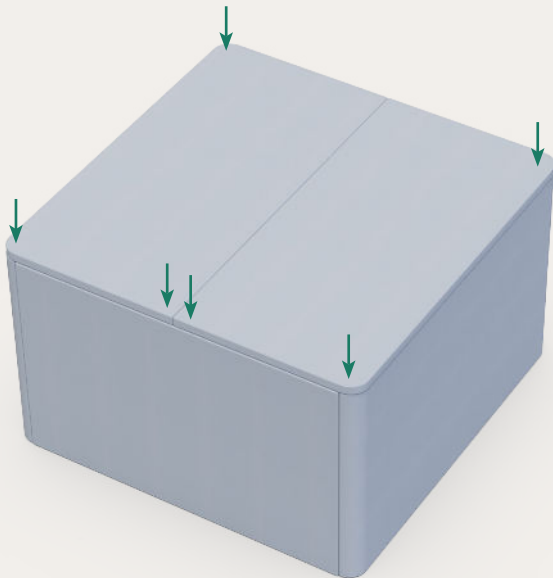
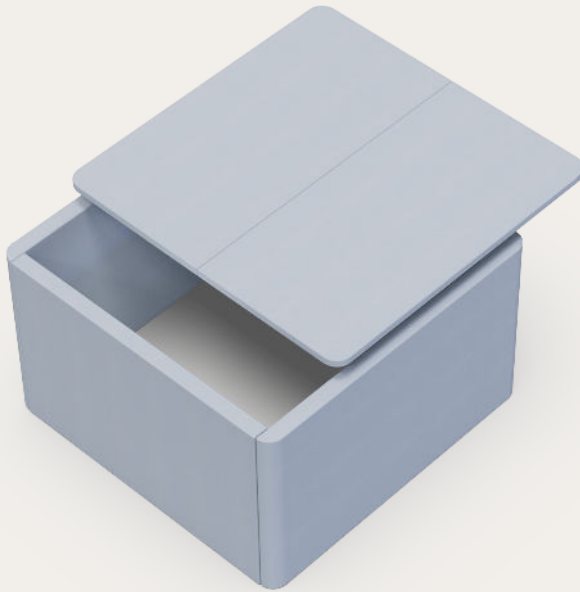
Once the cable has been pulled through the hole. Screw the seat buckets to the corners of the roof using **4 or 6 x 90mm** screws (6 screws needed if the booth is a 6 seater) making sure that **all 4 corners are flush and level at the top of the booth.**



## For ventilation

If the booth has ventilation, then this will be positioned at the back of the booth.

# 3



## 3.1

Position the booth so that the front of the booth is face down.

Next, get the back panels and lay them on top of the booth. **The corners of the back panels should line up with the corners of the booth.**

## 3.2

Using the **M6 x 100mm** bolts provided, secure the back walls together with a washer either side. You should need 4 bolts for the back walls. The holes should already be pre-drilled. **Do not completely tighten these yet.**

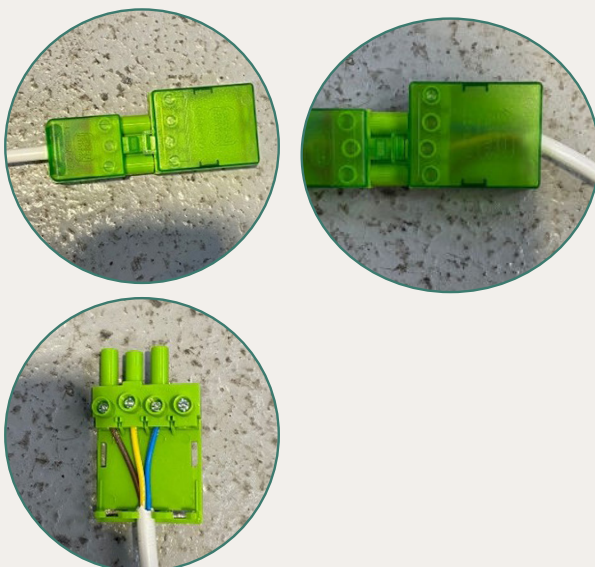
## 3.3

Screw the 4 corners of the back wall into the seat bucket. Do this using **4 x 90mm** screws.

Once the walls are secured at the corners, tighten the back wall bolts until they join up tightly in the middle.

Then screw the top of the back wall to the roof and into the seat boxes to secure it in all areas.

# 4



## 4.1

Next, you will need to wire up the two cables so that they join in the green connector box. The green connector will have labelled ports for each wire. **Follow these very carefully.**



## 4.2

The booth can then be stood upright, and the table will then need to go on.

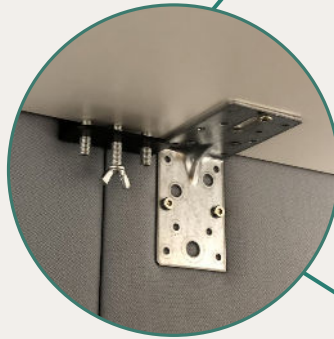
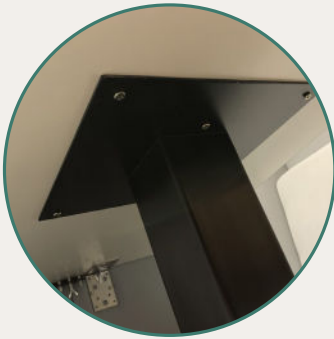
### For Table Top Power

If the booth has tabletop power, this will need to be attached to the table first using the clamp provided. This will be positioned so that the seam of the table will go against the back wall.

## 4.3

The table should be positioned so that it is level front to back and sideways. **Make sure the table is central to the split line of the booth.**

If required a bracket will be supplied to secure the table to the back wall (this is only necessary if there is only one leg in the booth).



# 5

650mm



### 5.1 For Table Top Power

If the booth has tabletop power, you will need to cut a 54mm or 57mm hole in the back wall. **Do this using a combi drill and a hole cutter.**

The hole will need to be underneath the table, **650mm** is a good height to drill the hole at as the table will go on at 720mm. You will need to do this from the outside of the back wall inwards. **Perform this task slowly, as if you go too far it could cut or rip the fabric on the inside of the booth.**

## 5.2

Once the hole has been cut, then cut the fabric covering the hole and insert a grommet in this hole.

# 5



## 5.3

The next step is to add the seat pads and the lumbar support. This is all done with Velcro, so the best way is to line up the front edge first then push the back edge down so that it fits snug.

# 6



## 6.1 Den with glass

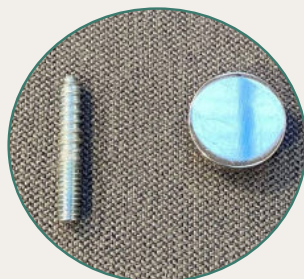
**Please clean every panel before putting it on the booth. Do this with a rag and some window cleaner!**

## 6.2

Start with the right-hand side panel. This can be determined by the panel with hinge holes.

This needs to be secured with the threaded pins and the buttons provided. To do this, clamp the glass to the top right-hand side.

**This should be done so the glass is 5mm above the top of the booth.**





## 6.3

Next use a flat head screwdriver and a mallet to make an indent in the frame through the holes. This is to guide the threaded pin into the right position.

The threaded pin will then need to be drilled through these holes so that the pin just sticks out over the glass. This is then secured to the frame using the chrome buttons. To tighten these, use the moustache shaped tool provided.

## 6.4

The next step with the glass is to put the hinges on the glass door.

**This should be done using an Allen key.**

Do not tighten the screws completely as its best to have a little bit of play in the hinges when attaching it to the right-side panel.



## 6.5

Attach the glass door and hinges to the right-side panel. Its best to carry the glass using a suction handle and position the glass door using an air bag.

Once the hinges are in the holes tighten the screws fully using an Allen Key.



## 6.6

For the left-hand side panel, close the door and line the glass up with the door so that the top edges line up. **You will need to line right edge of the glass with the glass door making sure there is a 5mm gap between the two panels.**

Clamp this glass panel and follow the same process as the right-hand side panel. **Make sure that the holes for the handle line up as this is important for the next step.**

# 6



## 6.6

The handle housing and the latch housing will then need to be attached to the glass door and the left-hand side panel.

**These components have instructions with the boxes so follow those carefully.**

## 6.7

The last step is to stick on the hinge covers so that the screws aren't on show. These are included in the hinge boxes and the sticky cover will just need peeled off.

**Please give the glass another clean to get rid of any marks.**









[www.jddfurniture.com](http://www.jddfurniture.com)

JDD Furniture Ltd  
905, Causton Street  
Birmingham  
B1 3AL, UK