

TORO

LOUNGE CHAIR

PLEDGE



TORO: LOUNGE CHAIR

Toro's winged back cradles your spine and embraces your sides, providing comfort and relaxation, while cushioned, curved armrests offer the perfect support for your arms and shoulders.

With its wide range of colours, and three leg designs to choose from, Toro complements any style, and is the perfect choice for offices, hotels, staff chill-out zones, café culture, and any other commercial environment.

FEATURES

FRAME CONSTRUCTION

Steel Rod Frame

FOAM

Combustion Modified High Resilience (CMHR) foam

BASE: FOUR STAR

Four star swivel base

Finish: Black (RAL 9011)

BASE: SLED

11 mm steel rod sled base

Finish: Black (RAL 9011)

BASE: WOODEN

Four Leg Frame

Finish: Ash

POLICY

Pledge manufacture in the United Kingdom and are a true manufacturer producing wooden, steel and upholstered products at our site in Leighton Buzzard.

We are committed to the efficient use of energy and continually review our processes to reduce environmental impact seeking to utilise technologies which minimise energy and material consumption in our products and services.

CERTIFICATION

Pledge is ISO9001 & ISO14001 certified, guaranteeing quality and environmental management standards are met.

Furniture Industry Sustainability Programme (FISP)

Furniture Industry Research Association (FIRA)

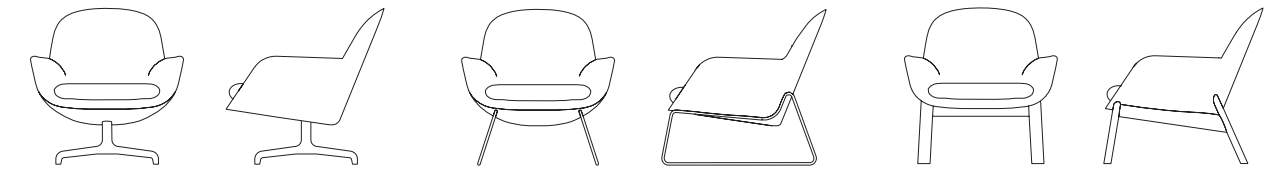
OPERATION

Pledge offers a 5-year warranty on structural components. Fabrics are covered by the manufacturers' guarantee.

These terms apply to Pledge Seating used only in general office environments during normal working hours and subject to fair wear and tear. Terms for seating used 24/7 application are available on request.

Our full terms concerning warranties can be found in our Seating Price Guide under terms and conditions section 9.

TORO



TOR01 | Low Back Armchair.

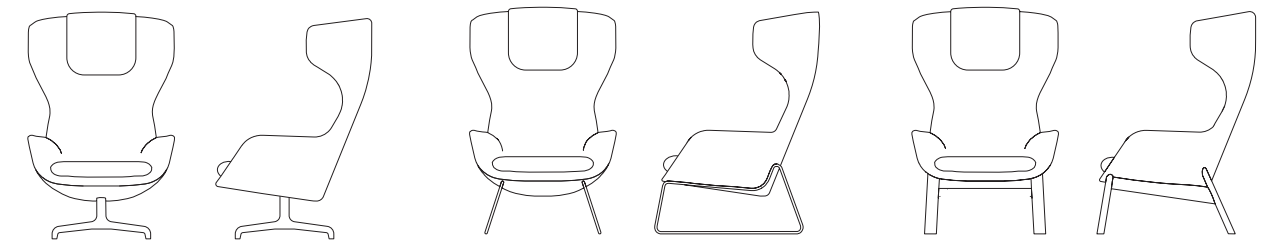
Overall Height	800 mm
Overall Width	760 mm
Overall Depth	850 mm
Seat Height	400 mm
Seat Depth	500 mm
Weight	17 kg

TOR03 | Low Back Armchair.

Overall Height	800 mm
Overall Width	760 mm
Overall Depth	850 mm
Seat Height	400 mm
Seat Depth	500 mm
Weight	17 kg

TOR05 | Low Back Armchair.

Overall Height	800 mm
Overall Width	760 mm
Overall Depth	850 mm
Seat Height	400 mm
Seat Depth	500 mm
Weight	17 kg



TOR02 | High Back Armchair.

Overall Height	1100 mm
Overall Width	760 mm
Overall Depth	850 mm
Seat Height	400 mm
Seat Depth	500 mm
Weight	21 kg

TOR04 | High Back Armchair.

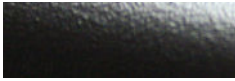
Overall Height	1100 mm
Overall Width	760 mm
Overall Depth	850 mm
Seat Height	400 mm
Seat Depth	500 mm
Weight	21 kg

TOR06 | High Back Armchair.

Overall Height	1100 mm
Overall Width	760 mm
Overall Depth	850 mm
Seat Height	400 mm
Seat Depth	500 mm
Weight	21 kg

TORO

METAL FRAME FINISH



Black (B) RAL 9011



White (W) RAL 6016



Bronze (BR) Y2241F



Silver Painted (P)

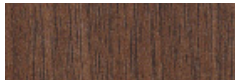


Chrome (C)

WOODEN BASE STAIN FINISH



Black (BK)



Walnut (WL)



Oak (O)



Natural (BE)

OPTIONS

No headrest (NHR)

NOTES

N/A

ENVIRONMENTAL

Recycled Content: 0% (estimated)

Recyclable Content: 95%

Plastic components >25g are labelled in accordance with ISO 11469

HQ

Pledge Chairs Ltd.
Mill Road
Leighton Buzzard
Bedfordshire
LU7 1BA
+44 (0)1525 376181
sales@pledgechairs.co.uk

SHOWROOM

First Floor
21-22 Great Sutton Street
Clerkenwell
London
EC1V 0DY
+44 (0)20 7253 7277
showroom@pledgechairs.co.uk

www.pledgechairs.co.uk